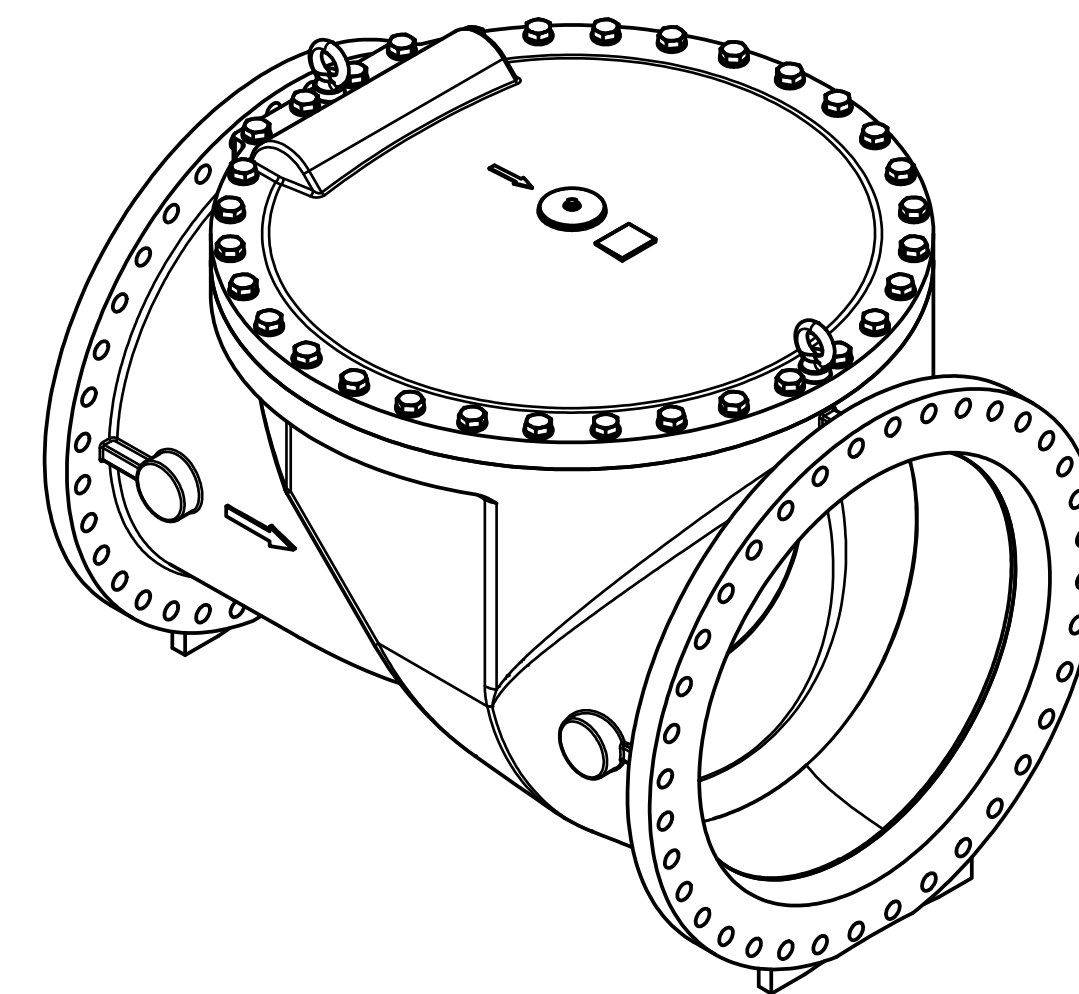
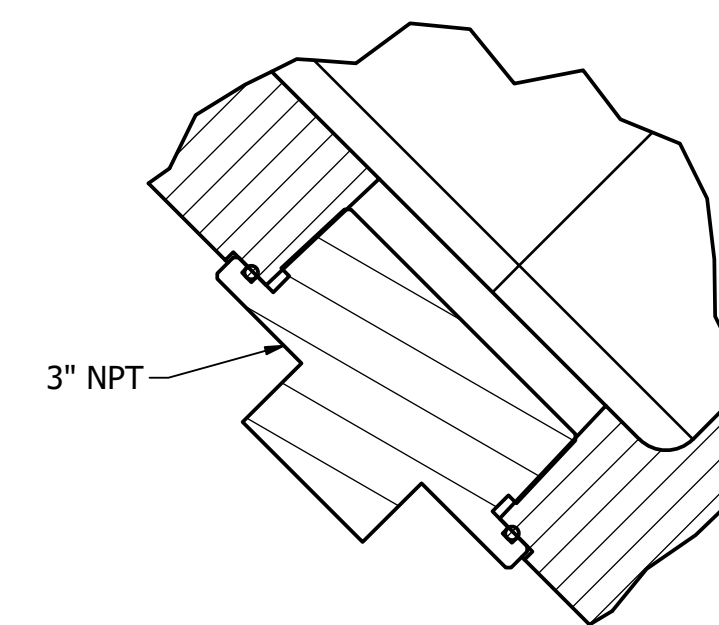


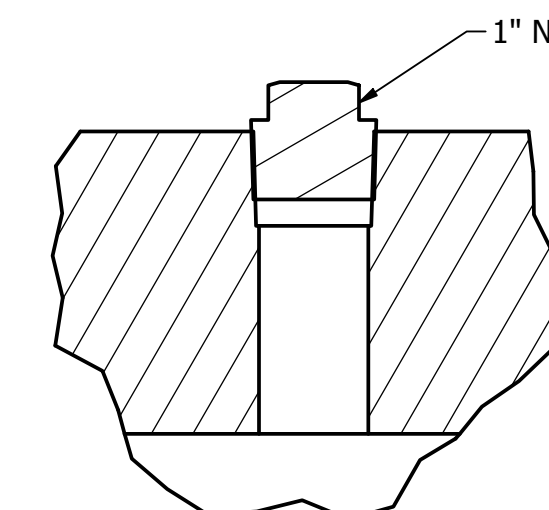
SECTION A-A  
SCALE 1/4" = 1"



ISOMETRIC  
SCALE 1/16" = 1"



DETAIL A  
SCALE 6" = 1'-0"



DETAIL B  
SCALE 6" = 1'-0"

BILL OF MATERIALS			
No.	DESCRIPTION	QTY.	MATERIAL
1	BODY	1	DUCTILE IRON
2	COVER	1	DUCTILE IRON
3	DISC	1	EDPM RUBBER COATED STL
4	GASKET	1	NBR
5	COVER BOLTS	24	SST

BREAK SHARP EDGES

**GA INDUSTRIES, LLC**  
42" RUBBER FLAPPER SWING CHECK VALVE; 125# ANSI FLANGES

DIMENSIONS IN INCHES  
STANDARD TOLERANCES (UNLESS OTHERWISE NOTED):  
X = ±.1  
XX = ±.01  
XXX = ±.005  
FRACTIONS = ±1/64  
ANGLES = 3° MAX  
PER ANSI Y14.5M -3/32 FLATNESS, ROUNDNESS, POSITION

CASTING STOCK MINIMUM (SMALLEST DIM. TO SURFACE):  
0 TO < 1 = 1/8  
1 TO < 6 = 3/16  
6 TO < 12 = 1/4  
12 AND > = 3/8

SERIAL NO.	FIGURE NO.	DATE	SCALE	DRAWN BY	APPR. BY
	200	5/6/2021	1 / 10	JCS	
PROPERTY OF GA INDUSTRIES, LLC					
REFERENCES	FILE	DRAWING NO.	REV		
		RF-42000	A		

C:\Projects\Engineering\AutoCAD\Flapper Swing Check Valve RF-42000.dwg

REV	DESCRIPTION	DATE	BY
A	ADDED VIEWS A AND B	10/10/2021	JCS