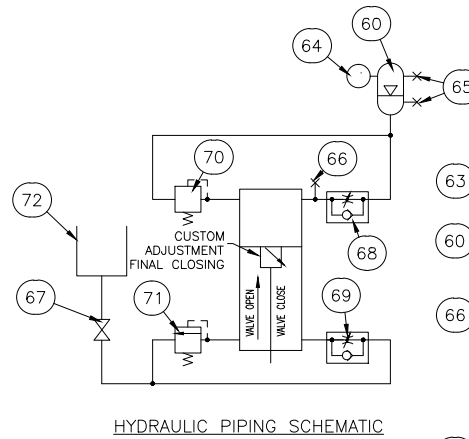
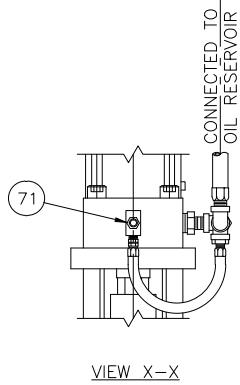
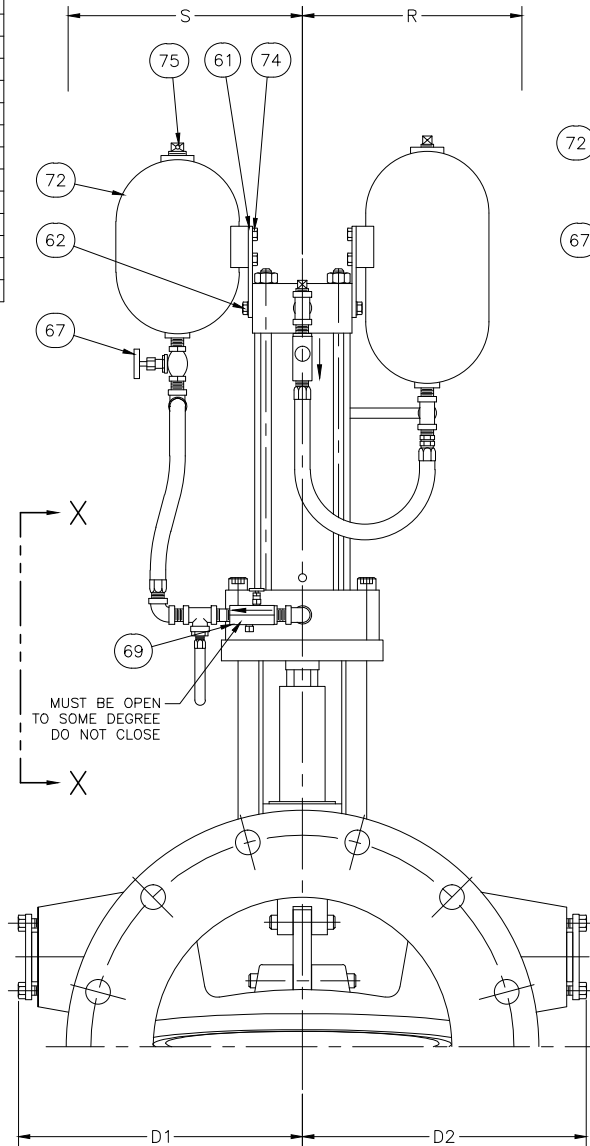


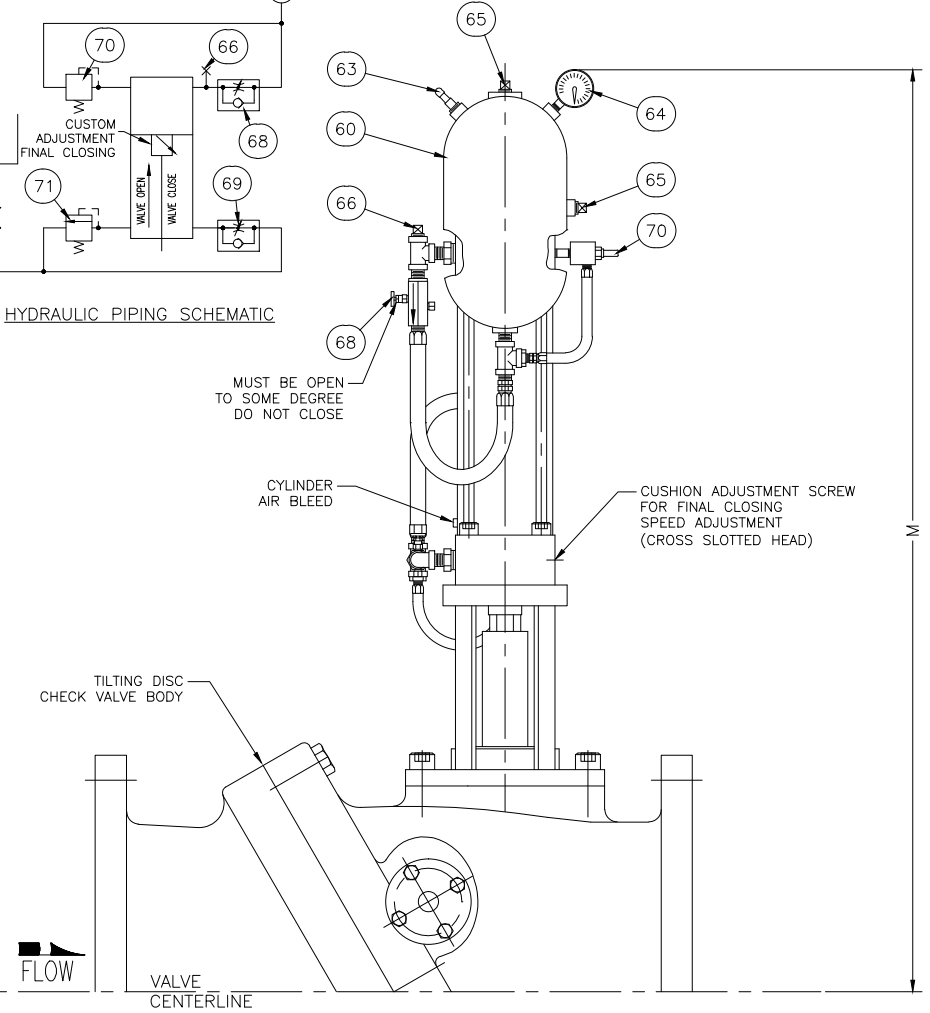
PARTS LIST

No.	DESCRIPTION
60	AIR/OIL TANK
61	TANK & RESERVOIR MTG. PLATES
62	PLATE MOUNTING SCREWS
63	AIR CHARGING VALVE
64	AIR PRESSURE GAUGE
65	OIL FILL PLUG
66	OIL BLEED PLUG
67	OIL RESERVOIR STOP VALVE
68	OPENING SPEED CONTROL
69	CLOSING SPEED CONTROL
70	OPENING RELIEF VALVE
71	CLOSING RELIEF VALVE
72	OIL RESERVOIR
74	TANK & RESERVOIR MTG. BOLTS
75	OIL RESERVOIR VENT/FILL PLUG

NOTE: AIR/OIL TANK & OIL RESERVOIR
MUST BE MOUNTED VERTICALLY



REV.	DESCRIPTION	DATE	BY
A	ADDED 42" VALVE SIZE & DIM'S	08-16-2000	MJB
B	REMOVED TANK & RESERVOIR MTG. PLATES	09-20-2000	MJB
C	ADDED TANK & RESERVOIR MTG. PLATES	11-10-2001	MJB
D	ADDED 6" VALVE SIZE	12-10-2001	MJB
E	REVISED 16", 20", 24" VALVE "R" & "S" DIM'S	01-06-2003	MJB
F	REDRAWN IN AUTOCAD	08-31-2010	RJT



	7	9 1/2	9 3/4	12 1/2	13	14 1/4	15 1/4	17	18 1/4	24	26 1/2	30
D2	7	9 1/2	9 3/4	12 1/2	13	14 1/4	15 1/4	17	18 1/4	24	26 1/2	30
D1	7	9 1/2	9 3/4	12 1/2	13	14 1/4	15 1/4	17	18 1/4	24	26 1/2	30
S	7 1/2	7 1/2	9	9	9	12 1/2	12 1/2	12 1/2	12 1/2	17 1/2	17 1/2	20
R	7 1/2	7 1/2	12	12	12	16 1/2	16 1/2	16 1/2	16 1/2	17 1/2	17 1/2	20
M	26	27	30	32	34	45	53	53	56	68	86	95
VALVE SIZE	6"	8"	10"	12"	14"	16"	18"	20"	24"	30"	36"	42"

DIMENSIONS

GA INDUSTRIES, LLC

6"-42" TILTING DISC CHECK VALVE
TOP MOUNTED DASHPOT HYDRAULIC PIPING
WITH SLOW OPENING & TWO STAGE CLOSING SPEEDS

STANDARD TOLERANCES (UNLESS OTHERWISE NOTED) FINISHED SURFACES ONLY DIMENSIONS SHOWN IN INCHES X = ±.002 XX = ±.010 XXX = ±.002 FRACTIONS 1/16" ANGLES ±1° FINISH: Ø = XX RMS	SERIAL NO.	SCALE	DRAWN BY	
		NONE	MJB	
REFERENCES	EFFECTIVE DATE	FILE	DRAWING NO.	REV.
	06-22-2000 TO	7125-T	TD-1022	F
	APPR. BY			

J:\TILTDISC\TD-SHOW\TD-1022-F.DWG